

Services Available For St. Louise de Marillac Parishioners

- Companionship (friendly visits)
- Shopping / errands
- Respite sitting (while caregiver is gone or on break)
- Reading / letter writing
- Driving to doctor visits / church
- Light housework (vacuum, dusting)
- Follow-up visits
- Bereavement services
 - Funeral planning with family
 - Family support
 - Family visits (checking in)

Access

When you need to access our service, please feel free to call, write a note, or e-mail us at:

St. Louise de Marillac Rectory
1144 Harrison Avenue
LaGrange Park, Illinois 60526

Rectory telephone 708 352-7388
Email: parishoffice@slmparish.org

Volunteering

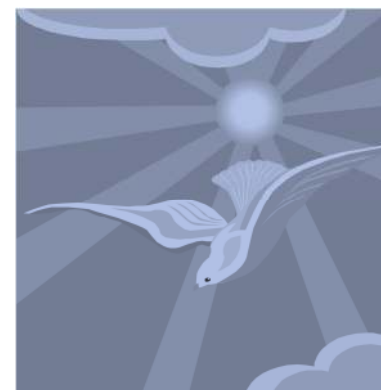
Please contact us through the rectory, website or mail.

For more information, check out The Friends of the Parish Respite Group on the St. Louise de Marillac website at: www.slmparish.org

Friends of the Parish

Respite Group

St. Louise de Marillac Church



**A Faith-based Alliance
for the
St. Louise de Marillac Parish**

**A Faith-based Alliance
for the
St. Louise de Marillac Parish**

**Friends of the Parish
Respite Group
St. Louise de Marillac Church**

What Is Respite Care?

Respite care is short term care that helps a family take a break from the daily routine and stress. The care is provided in the person's home or in a variety of out of home settings.

Respite care is an essential part of the overall support that families may need.

What is Hospice?

A special kind of care designed to provide comfort and support for patients facing a terminal illness as well as attention for their families.

The care is provided in the person's home and provided by a hospice organization

What is Bereavement?

The situation you are in when a close friend or family member has perished.

The care is not to fix grief but is about the privilege of being a companion and a facilitator to help through the healing process.

Our Mission

The mission of the Friends of the Parish Respite Group at St. Louise de Marillac Church is to provide support to the patient as well as to their caregiver/family.

This Ministry strives to strengthen our congregation in helping each other in a time of need where compassion is of the essence.

Our Partners

Friends of the Parish Respite Group is a St. Louise de Marillac Church Ministry developed to work with and assist our parishioners in times of need. These times include respite and hospice volunteers as well bereavement services.



About Us:

***The Friends of the Parish
Respite Group
are parishioners who have
volunteered to give their time
for the needs of our family at
St. Louise de Marillac Church.***

*(Our training included instruction
from a west suburban hospice.)*

